



TENDO Sprint System

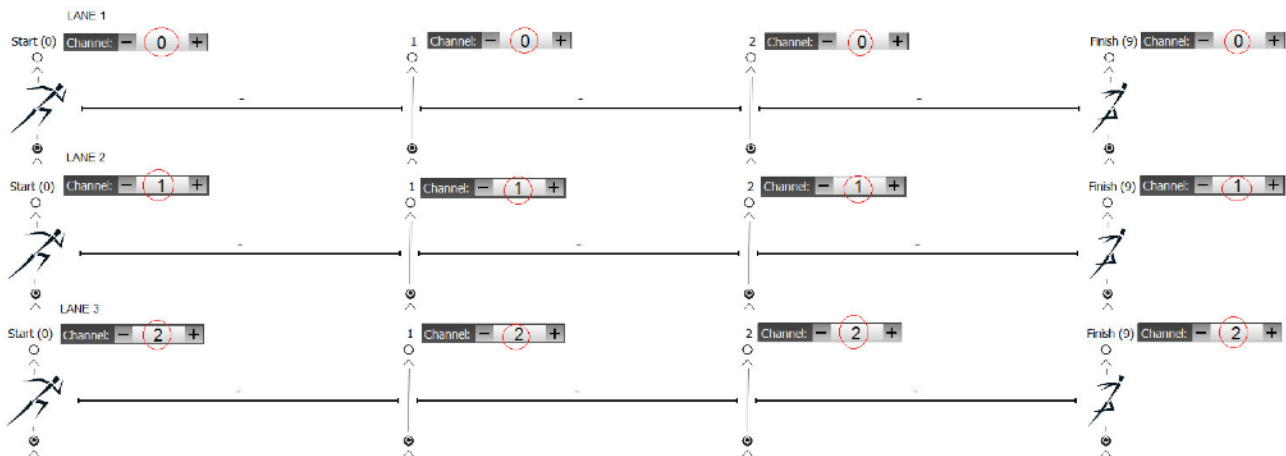
INTELLIGENT, WIRELESS TIMING SYSTEM

MULTI - LANE CONNECTION

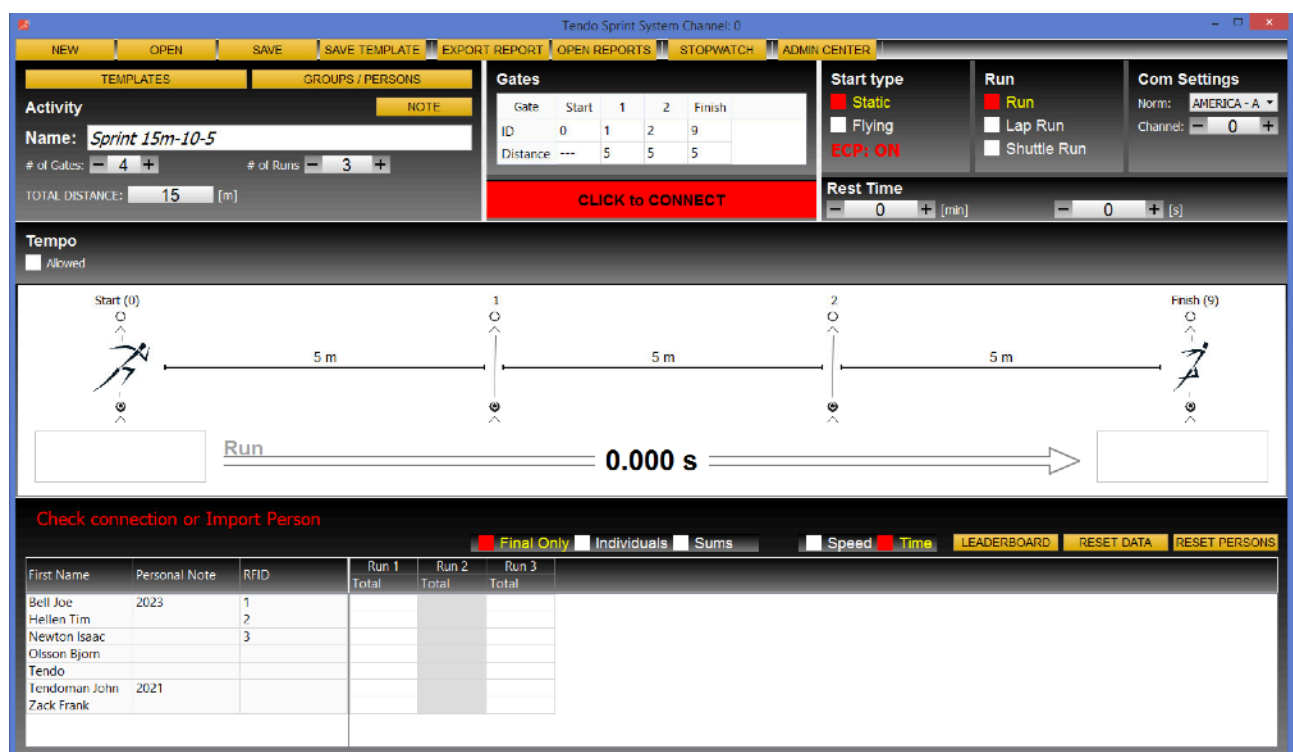


HOW TO CONNECT MULTIPLE OPTOGATE LANES WITH A SINGLE COMPUTER OR TABLET?

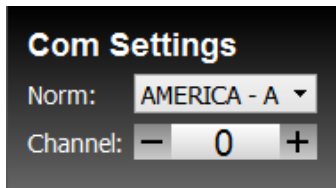
1. Connect TSS Receivers for each lane to a computer or tablet via USB cables. If your laptop/tablet does not have enough USB connectors, use a USB Hub.
2. Choose the same communication channel for all photocells of the same lane.
e.g. Lane 1 – Channel “0”, Lane 2 – Channel “1”, Lane 3 – Channel “2”



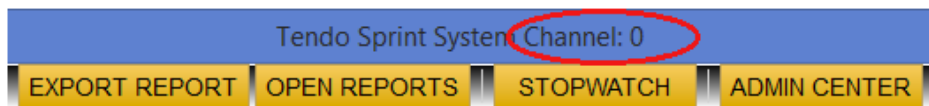
3. Switch ON all photocells.
4. Open Tendo Sprint System software window. Select Activity and Group / Persons



- Choose the channel number "0" for the lane #1



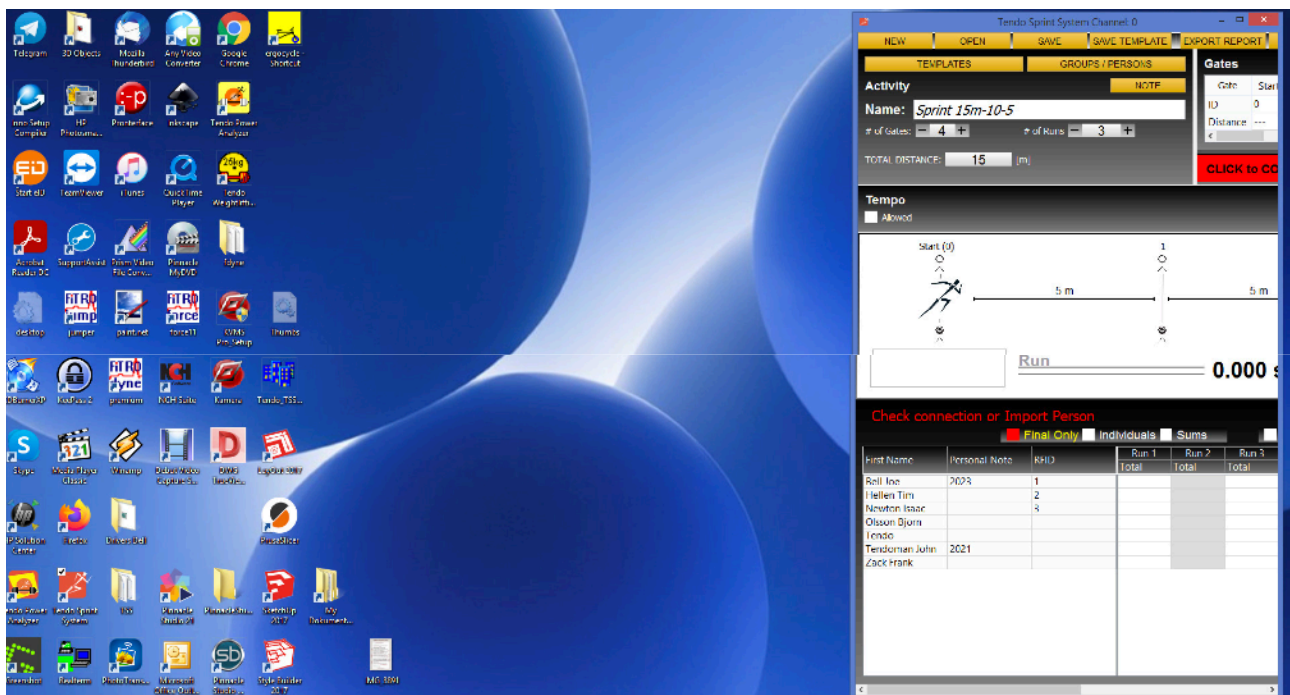
The channel number also appears on the top of the software window.



- Minimize the software window using the "Minimize button".



Adjust the software window to a desirable dimension, e.g., one third or one half - depending on how many lanes will be used (three or two). Place the software window on the right side of your monitor.



- Choose the channel number "1" for the lane #2

- Minimize the software window using the "Minimize button".

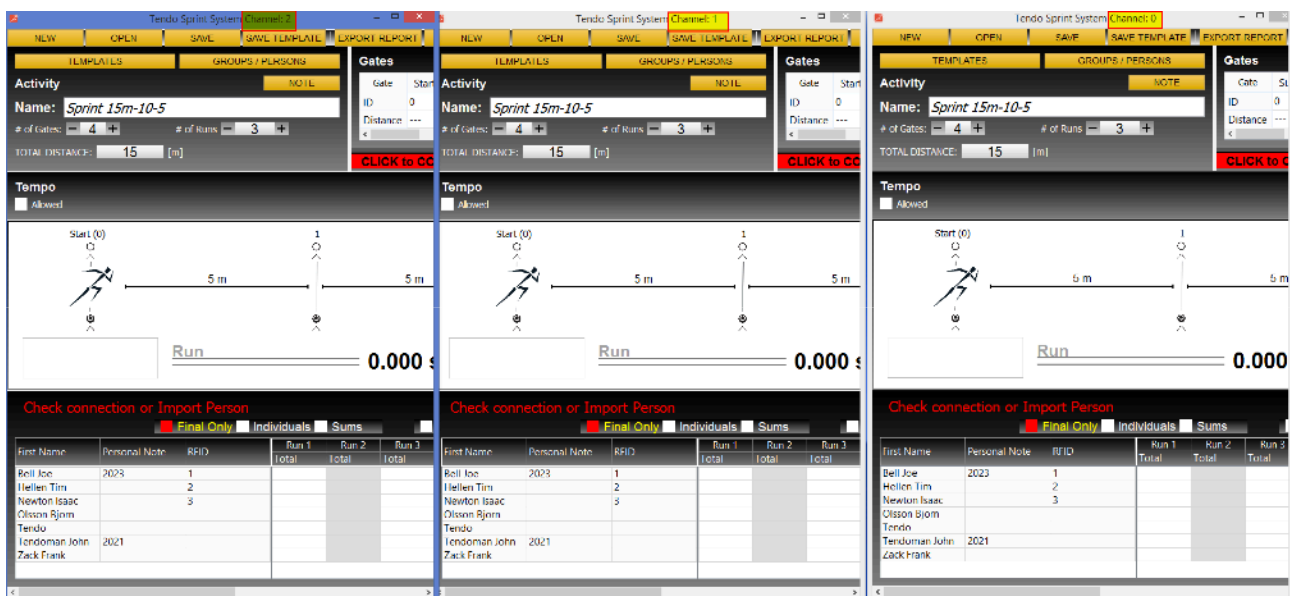


Adjust the software window to a desirable dimension, e.g., one third or one half - depending on how many lanes will be used (three or two). Place the software window next to the previously opened software window



9. Repeat the same process for the lane #3

Open another software window. Choose channel number "2" for the lane #3. Select Activity, Group / Persons and minimize the software window to the desired dimension and place the software window next to the previous one.



10. Make sure all photocells are turned on, and the channel setting in the computer software matches the photocells' setting. Then, click the "Click to Connect" command to connect the software with the photocells.

11. If the connection is OK, select an athlete and click on the "**Start**" button to start the measurement.

START					
<input checked="" type="checkbox"/> Final Only <input type="checkbox"/> Individuals <input type="checkbox"/> Sums					
First Name	Personal Note	RFID	Run 1	Run 2	Run 3
			Total	Total	Total
Bell Joe	2023	1			
Hellen Tim		2			
Newton Isaac		3			

Recommendation:

It is recommended to use two lanes in one computer. More than two lanes at a time in one computer could become challenging to operate by one person.

However, using the RFID reader and RFID wrist bands can optimise the process and make the measurement fully automated.