



TENDO Unit

YOUR INTELLIGENT WEIGHT TRAINING

HARDWARE

USER MANUAL



CONTENT

Overview.....	3
1 Technical description.....	4
2 Installation steps.....	5
2.1 Battery installation.....	5
2.2 How to attach microcomputer to a tripod or rack.....	5
2.3 Connecting microcomputer and sensor unit.....	7
2.4 How to attach sensor unit to barbells or exercise machines.....	8
3 How the microcomputer operates.....	9
4 What is measured and calculated.....	10
5 Sensor's range of motion.....	10
6 Microcomputer setup.....	10
6.1 ON / OFF.....	10
6.2 Enter setup mode.....	11
6.3 Exit setup mode.....	12
6.4 What can be set up in setting mode.....	12
6.4.1 Load.....	12
6.4.2 Audio signal upper/lower limits.....	12
6.4.3 Filter.....	13
6.4.4 % limit for partial average power and peak force.....	14
6.4.5 Rest time measurement.....	16
6.4.6 Eccentric average velocity.....	16
6.4.7 Imperial units setting for load	17
7 Factory settings.....	17
8 Batteries.....	17
8.1 How to charge batteries.....	17
8.2 Battery exchange.....	18
9 How to use the system.....	19
9.1 ON / OFF, weight adjustment, rest time measurement.....	18
9.2 Power, Velocity, Force measurement.....	19
9.3 Deleting data.....	19
9.4 Deleting last repetition.....	20
9.5 Battery saver.....	20
10 Memory.....	20
11 Connection to computer.....	21
12 Maintenance and trouble-shooting.....	21

TENDO POWER ANALYZER V- 316

A microcomputer system for strength diagnostic and feedback monitoring of weight training.

Thank you for purchasing the Tendo Power Analyzer

The purpose of this manual is to guide you through the first basic steps necessary to set up the system and give you an idea how to begin.

What comes as a part of the unit?

- Microcomputer
- Sensor Unit
- Data Cable
- Tripod
- Rechargeable Batteries (4x of AA size, type NiMH)
- Built-in Battery Charger
- AC / DC Power Supply Adapter
- Manual
- Carrying Case
- iButton Reader for identification of the person with iButton for Tendo computer software



What is optional?

- TENDO Bluetooth - wireless connection to the computer.
- The Tendo Analyzer computer software

1. TECHNICAL DESCRIPTION

System consists of 2 functional components: Sensor Unit and Microcomputer

SENSOR UNIT



Power Analyzer

MICROCOMPUTER



Power Analyzer - WL

Sensor Unit is connected to the weight by a kevlar cord with a strap on a Velcro.

In weight exercises, muscles lift a mass m by applying a force F at a velocity v , produces average power P .

$$F = m \times g$$

$$P = F \times v$$

System measures vertical Average and Peak Velocity of the weight lifted.

Using known mass system also calculates Average Power, Peak Power and Peak Force in concentric phase of weight training.

To calculate Peak Power and Peak Force system uses equation:

$P = F \times v$, where $F = (m \times g) + (m \times a)$, g -acceleration of gravity and a -acceleration

System also measures downward average velocity and rest time between reps or sets.

2. INSTALLATION STEPS

2.1 BATTERY INSTALLATION

New rechargeable batteries are pre-installed in the battery compartment.

Before the microcomputer is operated, it is necessary to pull out a safety plastic strap from the battery compartment to release the battery contact. Afterwards, *tighten the 2 battery compartment screws using a Phillips screwdriver*. Battery compartment has a magnet for quick attachment to a rack or tripod. Rechargeable batteries come pre-charged, ready for use.

Use NiMH, AA size rechargeable batteries, 2000 - 2500 mAh.



2.2 HOW TO ATTACH MICROCOMPUTER TO A TRIPOD OR A RACK

The microcomputer unit is equipped with neodymium magnet for quick attachment to the rack or tripod. Just place the microcomputer unit on desirable place on metal rack or on metal plate of the tripod.

TRIPOD

Unfold the tripod and attach the microcomputer magnet to the tripod's metal plate.



RACK

Attach the microcomputer to the rack via the magnet on the back of your microcomputer unit. Place the Unit under the barbell, facing forward or sideways.



For quick microcomputer release from the rack or tripod, turn the microcomputer to the side or pull the unit from down side to up. For the microcomputer release from the tripod, hold the neck of the tripod to prevent its damage.

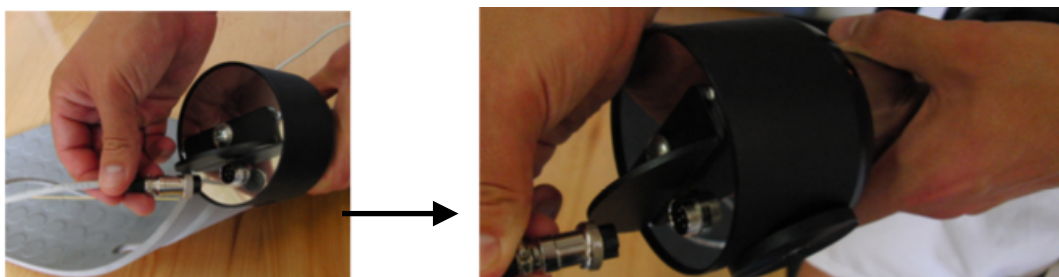


2.3 CONNECTING MICROCOMPUTER AND SENSOR UNIT

1. Plug the male connector of your Data Cable into the connector at the bottom of the microcomputer. The microcomputer is compatible with boths Power Analyzer sensor and Power Analyzer - WL sensor.



2. Plug the other end of the Data Cable into the appropriate connector on your Sensor Unit.



2.4. HOW TO ATTACH SENSOR UNIT TO BARBELLS OR EXERCISE MACHINES?

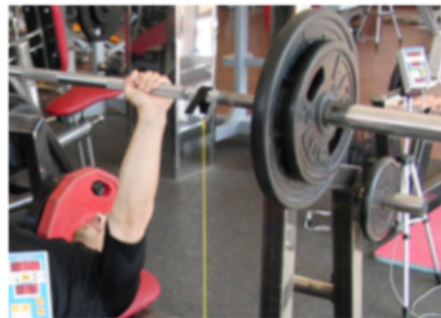
Fasten the cord of the sensor unit to the bar, dumbbell or top weight of the weight stack with the Velcro strap.

Position the cord so that, during the exercise, the trajectory of the cord will be as close to perpendicular to the floor as possible. See below examples.

Where to attach Sensor Unit?



• Outer end of bar



• Grip section



• Weight stack



• Athlete's waist - Power Analyzer –W



• Leg press machine

3. HOW THE MICROCOMPUTER OPERATES



After switching ON unit (press the ON/OFF button for 3 seconds, until you hear a short beep), weight of the barbell or stack is to be set using Up/Down buttons.

After each upward repetition:

- Upper display shows average / peak power, partial average power average / peak velocity, and peak force.
- Middle display shows a percent value of the best repetition in particular set and eccentric average velocity, if turned on.
- Lower display shows repetition number and rest time, if turned on.
- Preset parameter (avg / peak power, avg / peak velocity, partial avg power, peak force) in the first repetition will be set 100%. Subsequent reps will be displayed as percentage of this maximum. However, should any subsequent repetition be higher than previous 100%, it will be considered as the new 100%. All subsequent reps will be compared to. If there is a multi

weight exercise set (different weight setting without resetting between weight change), all reps will be compared with the absolute best repetition.

- Up to 500 reps can be stored and retrieved from memory.
- Reset button clears memory, recalls weight input.

4. WHAT IS MEASURED AND CALCULATED

- **Average power measured in Watts [W]** – for full range of motion.
- **Partial average power measured in Watts [W]** – average power for limited (pre set) range of motion from 0 to 100% of range of motion.
- **Peak power measured in Watts [W]** – the highest possible power in full range of motion. If the value of Peak Power is over 9,999W, the microcomputer displays the value in kW (e.g. 10.35 = 10,350W)
- **Average velocity measured in meter per second [m/s]** – for full range of motion.
- **Peak velocity measured in meter per second [m/s]** – the highest possible speed.
- **Peak Force measured in Newtons [N]** – maximum force for limited (pre set) range of motion from 0 to 100% of range of motion.
- Microcomputer also measures **a rest time between reps or sets measured in seconds**. After 10 seconds of the rest time, the microcomputer shows time from the last repetition or set.
- **Eccentric average velocity** (average velocity in downward movement) measured in meter per second [m/s]
- **Rest Time** and **Eccentric Velocity** can be turn on or turn off in setting mode.

5. SENSOR'S RANGE OF MOTION

Durable Kevlar cord, 2.7 meters (8.85') long.

Length of string makes it applicable for almost any power or Olympic lift and all vertical jumping applications.

6. MICROCOMPUTER SETUP

6.1 ON / OFF

To turn the power on or off, press the ON/OFF button for 3 seconds, until you hear a short beep.

If the batteries are charged, the green LED light flashes.
Red LED light indicates low battery power.



6.2 ENTER SETUP MODE

Press the Mode Button for 3 seconds, until you hear a short beep.

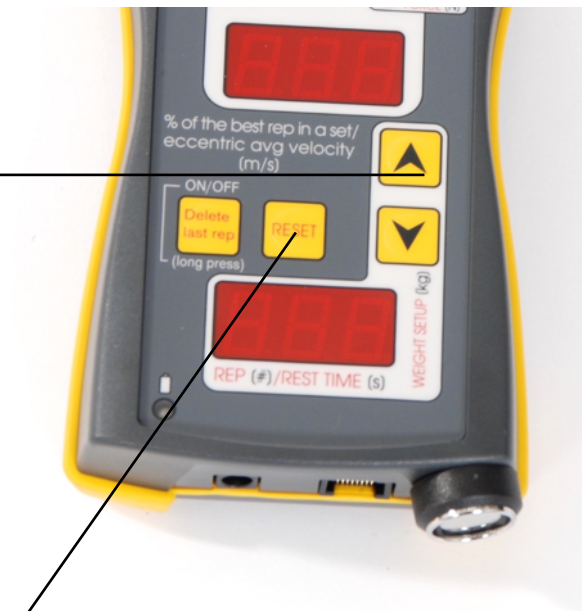
To scroll down the setup menu, press the Mode button



Identifying the parameters in the Setup Mode:

- **Load (Weight)** – microcomputer indicates on upper display „LoAd“
- **Filter** – microcomputer indicates on upper display „FILt“
- **Audio signal - Upper Limit** – microcomputer indicates on upper display „A-UP“
- **Lower Limit** – microcomputer indicates on upper display „A-LO“
- **% limit for Partial Avg. Power and Peak Force** (from 1 to 100%) – microcomputer indicates on upper display „P-AP“
- **Rest time (ON/OFF)** – microcomputer indicates on upper display „r-t“
- **Eccentric average velocity (ON/OFF)** – microcomputer indicates on upper display „ECS“
- **Lbs (ON/OFF)** - microcomputer indicates on upper display “lb” if the input weight setting in pounds is turned on

Use the Up and Down button to change settings.



6.3 EXIT SETUP MODE

Press Reset Button and all changes will be saved.

If you do not press Reset Button, the microcomputer exits from setup mode automatically after 30 seconds, without saving new settings.

6.4 WHAT CAN BE SET UP IN SETTING MODE

- Load
- Audio signal Lower/Upper Limit
- Filter 0 – 150 cm
- % limit for Partial Avg. Power and Peak Force
- Rest time
- Eccentric velocity

6.4.1 LOAD

It is possible to change a weight setting, even if data are measured, without resetting the microcomputer unit.

Use Up and Down buttons to change settings.

6.4.2 AUDIO SIGNAL LOWER/UPPER LIMIT

- **Upper limit** means every measured value of the selected parameter (power, velocity, force) which is above setting percent values of upper limit will be indicated by means of double beep.

- **Lower limit** means every measured value of the selected parameter (power, velocity, force) which is below a setting percent values of lower limit will be indicated by means of short beep.

Setting range:

Lower Limit range from 0% to Upper Limit.

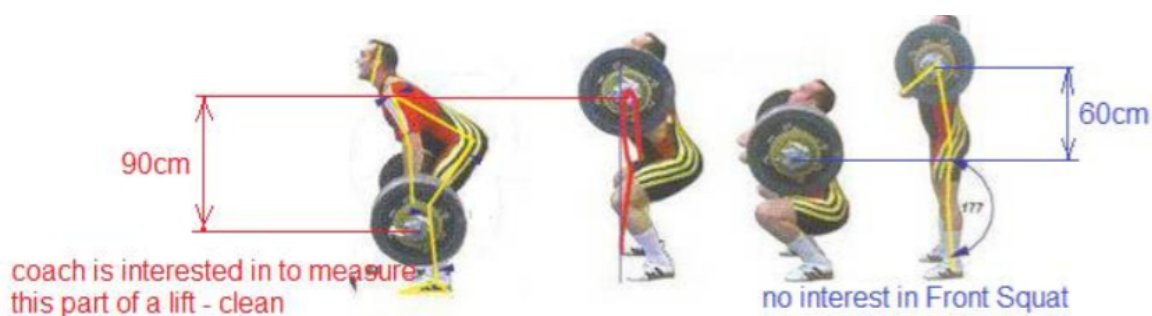
Upper Limit range from 100% to Lower Limit.

Use Up and Down buttons to change settings.

6.4.3 FILTER

Purpose of the filter is to hide unwanted movements. This means that all the movements with the range of motion less than the setting value of the filter, will not be shown on display.

For instance: take barbell from the rack, or short movement while holding a barbell, etc.



Filter setting to e.g. 70cm and the Tendo Unit displays just 1 repetition - for Clean.
Filter e.g. 35cm and the Tendo Unit displays 2 repetitions - for Clean and Front Squat.

Setting range - from 0 to 150 cm

Use Up and Down buttons to change settings.

FILTER is a limit from 0 to a certain predefined value of the range of motion in centimetres (10 centimetres = 0.1 meter), **which microcomputer does not show. It means the exercise range of motion has to be longer than the value of the Filter.**

- For **most of the exercises** we suggest to set Filter to 35 cm. (less than length of the motion)
- For **exercises with very short amplitude** (e.g. toe raise) we suggest to set Filter to 10 cm.
- For **exercises with very long range** (Olympic lifting exercises) we suggest to set Filter to more than 80 cm.

The microcomputer system measures from the lowest position to the top. The Filter does not have any influence on measured range. The Filter just causes to not show measurement results for motions shorter than the setting value of the Filter.

Remember: The value of Filter has to be set less than length of the motion. It is important to set up the right value of the Filter for weightlifting exercises. (see table 1)

Table 1

Exercise name	Power Snatch	Power Clean	Jerk	Clean Pull	Snatch Pull	Hang Clean	Hang Snatch
Filter value	70-90 cm	70-90 cm	30-40 cm	70-90 cm	70-90 cm	30-40 cm	30-40 cm

Exercise name	Squat	Bench press	Toe raise				
Filter value	30-40 cm	30-35 cm	8-12 cm				

6.4.4 % LIMIT FOR PARTIAL AVG. POWER AND PEAK FORCE

Partial Average Power is the value of average power, which is measured from start (0) to a certain predefined percent value of the range of motion. Default setting is 50%.

Setting range - from 1 to 100%

Peak Force measurement has the same range setting as Partial Avg. Power.

It means the system finds peak force for setting range, from 0 to a certain predefined percent value of the range of motion. Default setting is 50%.

Use Up and Down buttons to change settings.

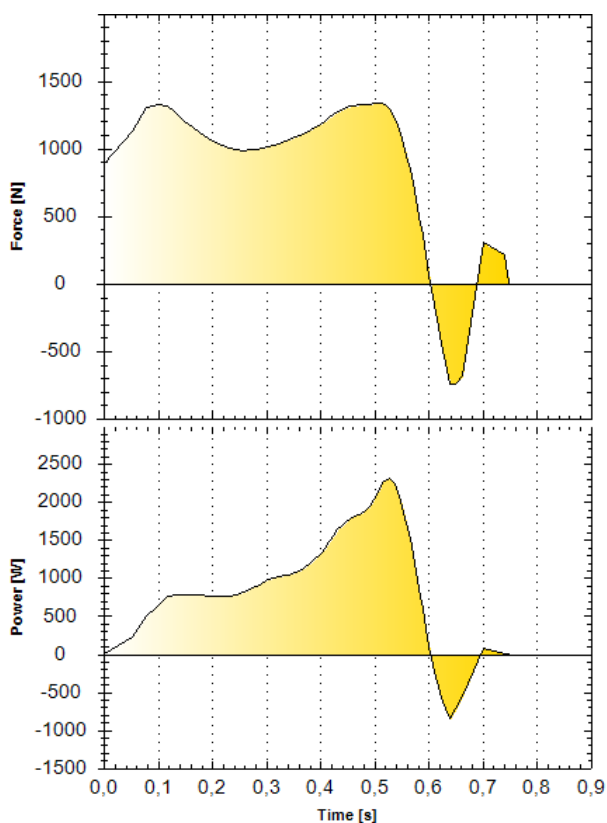
Why should you measure Partial Average Power?

Sometimes average or peak power are not sufficient parameters for assessment of athlete's qualities in weight training. Many athletes in effort to reach maximum power value try to accelerate at the end of the movement. This way, athletes reach high average and peak power values, but those parameters are misrepresenting the actual results. Simply said, being fast at the end of a movement is too late. These athletes do have high average and peak power values but with a low rate of force development. The rate of force development is a key factor in sports performance where explosiveness is required. The partial average power will help you to emphasise the rate of force development in your training and ensures the development of the explosive power.

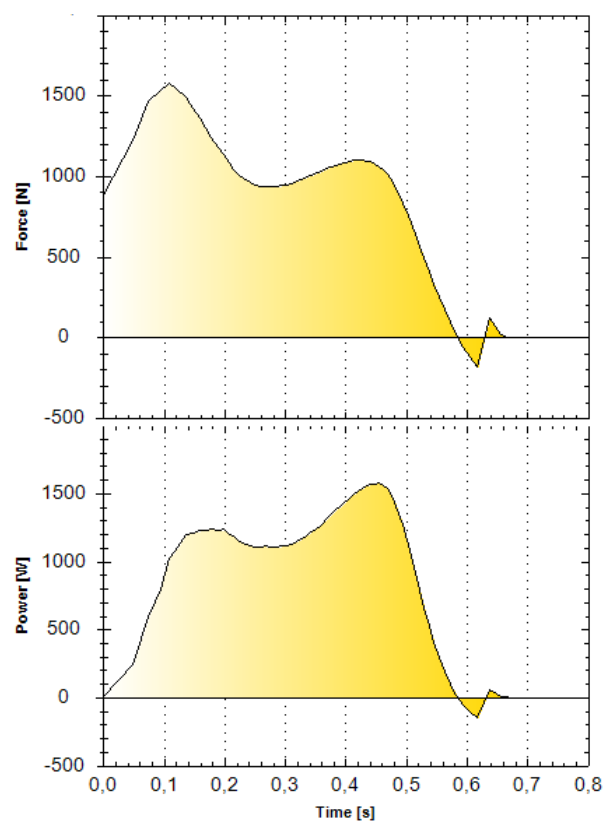
Example – Back Squat measured on waist

	Ice hockey player	Olympic weightlifter
Body weight	100kg	100kg
Vertical jump height	50cm	56cm
1RM Back Squat	160kg	230kg
Average power	954W	975W
Peak Power	2316W	1579W
Partial Avg Power (40%)	803W	1073W
Peak Force up to 0.25	1320N/0.15	1574N/0.115

Ice Hockey player

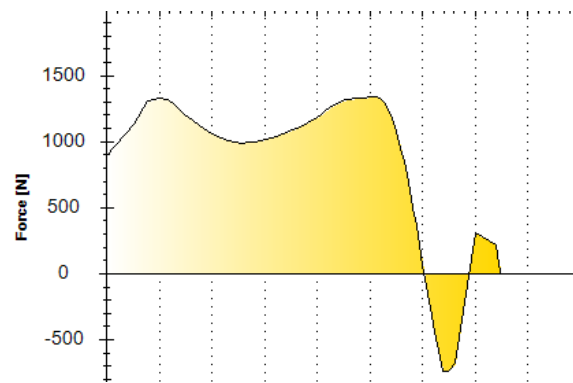


Olympic Weightlifter



Why should you adjust % Range for Peak Force measurement?

In some exercises there can be two positions for peak force. One at the beginning of the movement and another at the end. To filter out the undesirable peak at the end of the movement, just shorten the range for the measurement of the Peak Force.



Force x time graph for back squat

6.4.5 REST TIME MEASUREMENT

Microcomputer also measures a rest time between reps or sets. After 10 seconds of the rest time (Sensor Unit inactivity), the microcomputer will show time from the last repetition or set.

The rest time is shown on lower display if the rest time is turned on. The rest time is measured up to 999 seconds.

After 180 seconds of the microcomputer inactivity, the lower display is turned off, to save battery power. Any activity of the system turns on the displays.

To turn on the rest time, press Up button in setting mode.

To turn off the rest time, press Down button in setting mode.

If there are not data and rest time is turned on, press Mode button or Up/Down button to recall weight setup.

6.4.6 ECCENTRIC AVERAGE VELOCITY (ECS - ECCENTRIC SPEED)

The system measures average velocity in downward movement, if ECS – Eccentric Speed is turned on .

To turn on the ECS – Eccentric Speed, press Up button in setting mode.

To turn off the ECS – Eccentric Speed, press Down button in setting mode.

6.4.7 IMPERIAL UNITS SETTING FOR LOAD

The system enables to set the weight in pounds, if “lb” is turned on.

To turn on lbs – lb, press Up button in setting mode.

To turn off lbs – lb, press Down button in setting mode.

If the weight setup in pounds is turned off, the weight is entered in kilograms and the system use kilograms for power and force calculation.

Factory setting for weight setup is lb - OFF. It means the system use the kilograms for power and force calculations.

7. FACTORY SETTINGS

Load: 50kg

Filter: 35 cm

Audio signal upper limit: 100%

Audio signal lower limit: 90%

Partial Average Power and Peak Force range: 50% **Rest Time:** OFF

Eccentric Average velocity (ECS): OFF

8. BATTERIES

8.1 HOW TO CHARGE BATTERIES

The microcomputer has a built-in battery charger. To charge batteries, please use AC / DC Power Supply Adapter. (included in the package)

The Power Supply Adapter Input: 110 – 230V AC, 50-60 Hz, Output: 12V DC, 1.2A

Use the NiMH, AA size rechargeable batteries, 2000 - 2500 mAh.

Power Supply Adapter setup:

- Plug the connector into the appropriate socket at the bottom of the microcomputer
- Plug the power supply adapter to the 110 – 230 V AC outlet

Precautions:

- Do not exceed the rated operating parameters
- The device may interfere with radio and television sensitive equipment located nearby
- There is a risk of the harmless electric shock, fire or equipment failure. Do not disassembler or repair the device and do not touch the interior parts of the device.
- Do not disassembler the housing
- Dangerous voltages may still exit in the power supply even after few minutes from off the power.
- Damaged power cord must be immediately replaced by a qualified technician.
- Do not use the device if it emits smoke, an abnormal smell or strange sounds.

The battery indicator light while charging the unit: the battery indicator light emits a light only if the microcomputer is turned on.

- *red light indicates* – low voltage - the batteries need to be charged
- *flashes green light* – charging process
- *solid green light indicates* – the batteries are charged – end of charging process

8.2 BATTERY EXCHANGE

To open the battery compartment, located at the back side of the microcomputer, unscrew 2 screws from the battery compartment cover.

Referring to the insert drawing, place the batteries into compartment.

Press 4 batteries into the battery compartment. MAKE SURE that the positive ends of the batteries (marked “+“ are touching the springs (marked “+“) in the battery compartment.

Use the NiMH, AA size rechargeable batteries, 2000 - 2500 mAh.

If the batteries are located correctly in the battery compartment, after the microcomputer is turned on, the battery control LED light is flashing.

If the microcomputer is turned on and the battery control LED is red (low battery power), the batteries need to be charged.

It is possible to use the Power Analyzer even if the batteries are charging.

9. HOW USE THE SYSTEM

9.1 ON / OFF, WEIGHT ADJUSTMENT, REST TIME MEASUREMENT

To turn on the power, press the ON/OFF button for 3 seconds, until you hear short beep.

When the power is turned on, the lower display will begin displaying weight.

To adjust the weight of barbell or weight stack, use Up/Down buttons. (*press and hold for fast change*)

After 10s of inactivity, the lower display begin displaying rest time (if rest time is turned on).

If the Eccentric Speed is turned on, upper display will begin displaying ECS.

9.2 POWER, VELOCITY, FORCE MEASUREMENT

After each repetition, the repetition number begins to display on the lower display, actual value of average power, partial avg power and peak power, average velocity, peak velocity and peak force on the upper display and percent value of the best repetition on the middle display.

It is possible to change the weight setting, even if data are measured, without resetting the microcomputer unit. Go to setup menu and change the weight using Up and Down buttons.

To quit setup menu press Reset button.

The microcomputer will show you the exercise set data with different weight setting.

To view particular repetition, press Down or Up button. Prior the repetition with changed weight, upper display will show "LoAd" and middle display will show new changed weight for the following repetition.

If there are no measured data it is still possible to change the weight simply using Up and Down button without necessity to enter to the setup menu.

To scroll down the parameters in upper display, press Mode button.

9.3. DELETING DATA

Press Reset. This calls up delete process for all the data. Upper display shows "rSt" and middle display shows "ALL". To delete all data, press Reset button, again.

To leave deleting process after the Reset button was pressed, press Up and Down button.

9.4 DELETING LAST REPETITION

Press the ON/OFF button. This calls up delete process for last repetition data. The Upper display shows "dEL." Lower Display shows "Rep". To delete last repetition, press ON/OFF again.

To leave deleting process after the ON/OFF button was pressed once, press Up and Down button.

9.5 BATTERY SAVER

The microcomputer has a built-in battery saver to prolong the battery life. After 2 minutes of microcomputer rest period, the battery saver is turned on (6 LED Mode lights flashing clockwise) and the microcomputer switches off the displays. The battery saver is turned off automatically by pulling the Sensor Unit cable, or pressing any button. If the rest time is turned on, lower display shows rest time. After 3 minutes of microcomputer inactivity, the battery saver will turn off the lower display as well.

10. MEMORY

If there are data in the microcomputer before turning off, the data will stay in the memory as long as RESET is not pressed. After the microcomputer is turned on again the upper display shows "nnn". This indicates that there are data to be recalled. Do this by pressing the up and down button.

Press Reset for calling delete process for all data. Upper display shows "rSt" and middle display shows "ALL". To delete all data, press Reset button, again.

Press ON/OFF button for calling delete process for last repetition. Upper display shows "dEL.". To delete last repetition, press Reset button, again.

Exit from deleting process after the Reset or ON/OFF button was pressed, just press Up and Down button.

"nnn" in upper display, indicates data in memory.

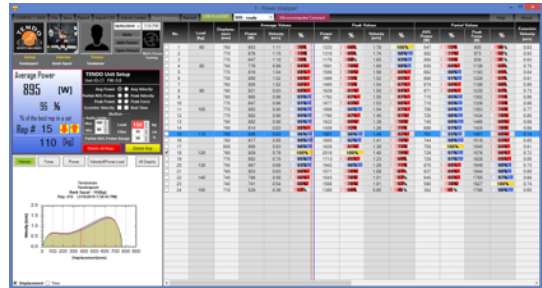
If there is data in memory and you do not delete them, it is possible to continue exercising without deleting this information. However, it will compare the previous Power or Speed data against your new workout.

If data is downloaded to the Power Analyzer computer software from memory, it is not possible to display graphs.

11. CONNECTION TO COMPUTER

Each Tendo Power Analyzer can also be interfaced with a computer via wireless Tendo Bluetooth.

- It is not needed to pair the bluetooth devices.
- The Tendo software recognises the bluetooth the same way as a cable.



Computer software and Tendo Bluetooth does not includes in the package and is an additional option in this models.

12. MAINTENANCE AND TROUBLE-SHOOTING

TENDO Power Analyzer can be cleaned with a soft, damp cloth. Avoid spilling liquid on the microcomputer and sensor unit.

Keep the microcomputer out of direct sunlight.

Remove the batteries when storing the Power Analyzer.

If the microcomputer does not function properly - the batteries should be charged.

In addition, make sure that the microcomputer wire is connected to the sensor unit.

!!! Check the Filter. The value of Filter has to be set less than the amplitude of the motion !!!

For indoor use, only.

Attention: This product contains magnet.

Magnet Safety

1. *Proper Magnet Handling:* Assure that no two magnets come in close proximity to one another when handling.
 2. *Transportation and Storage:* Wood, plastic or other non-ferrous containers can be used to create barriers around the magnet for safe transportation or storage.
 3. *Medical Devices:* Some medical devices (such as pacemakers and heart defibrillators) can be adversely affected by strong magnetic fields.
 4. *Credit Cards and Electronic Devices:* Credit cards, computer disks, and other magnetic storage devices away from magnets. Exposure to the magnetic field may result in malfunction or permanent damage to such items.
 5. *Keep away from mechanical watches, compass and hearing aid*
- CDs and DVDs sticks are not magnetic data carriers and will therefore not be damaged by static magnetic fields.
 - Cameras, cell phones and smart phones contain non-magnetic storage media. Therefore, static magnetic fields near those devices cannot delete data.

- USB sticks and memory cards are not magnetic data carriers and will therefore not be damaged by static magnetic fields.
- A static magnetic field does not damage a vehicle key or the embedded transponder for the anti-theft device. Therefore, you can hang up your vehicle key on a magnetic board.

Manufactured in Europe.

TENDO Sport
Zlatovska 22
911 01 Trencin
Slovak Republic

Phone / fax : 00421-32-6401500
e-mail: tendo@tendosport.com